



MONTHLY MEMBERSHIP PROGRESS REPORT

District A 711

Results as of: 5/31/2014

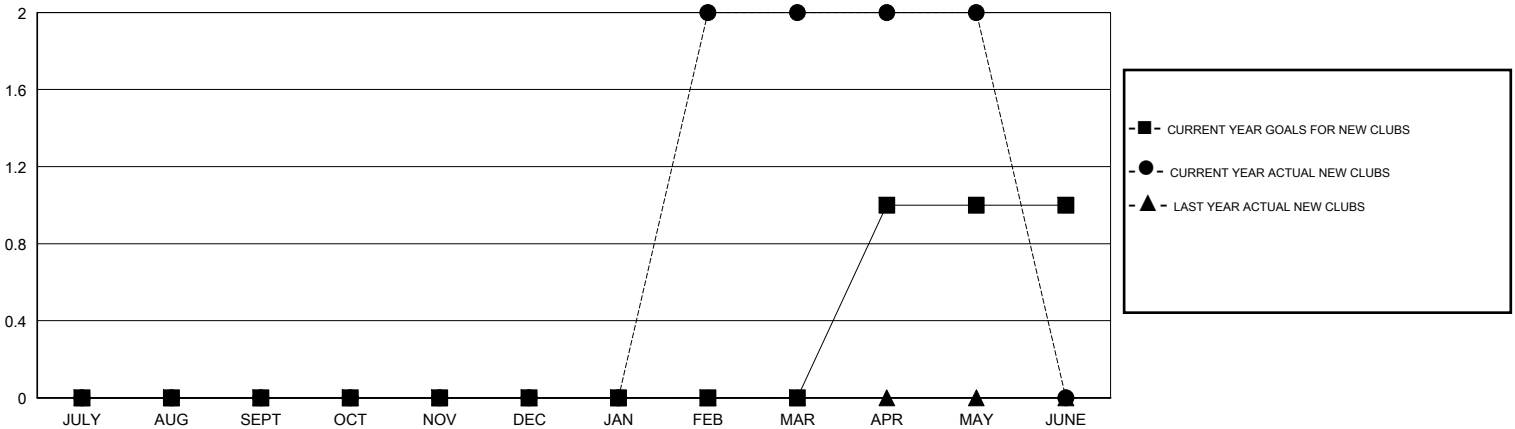
GMT: TERRY GRAHAM

LOCATION ONTARIO

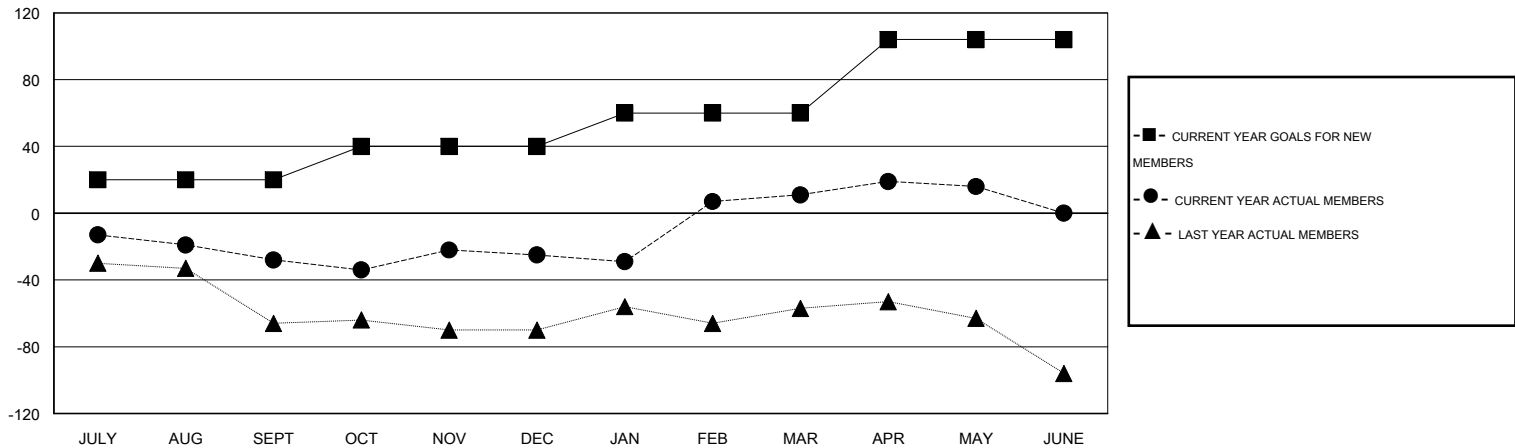
GMT CA 2

| Clubs | | | | | Members | | | | |
|-----------------------|---------------|------------------|----------------------|----------------------|-----------------------|-----------------|----------------------------|------------------------|----------------------|
| RESULTS FOR 2013-2014 | | | | | RESULTS FOR 2013-2014 | | | | |
| QUARTER | NEW CLUB GOAL | ACTUAL NEW CLUBS | ACTUAL DROPPED CLUBS | ACTUAL NET GAIN/LOSS | QUARTER | NEW MEMBER GOAL | ACTUAL TOTAL MEMBERS ADDED | ACTUAL DROPPED MEMBERS | ACTUAL NET GAIN/LOSS |
| JULY/AUG/SEPT | 0 | 0 | 0 | 0 | JULY/AUG/SEPT | 20 | 29 | 57 | -28 |
| OCT/NOV/DEC | 0 | 0 | 0 | 0 | OCT/NOV/DEC | 20 | 80 | 77 | 3 |
| JAN/FEB/MAR | 0 | 2 | 0 | 2 | JAN/FEB/MAR | 20 | 80 | 44 | 36 |
| APR/MAY/JUNE | 1 | 0 | 1 | -1 | APR/MAY/JUNE | 44 | 45 | 40 | 5 |

GOALS AND ACTUAL NEW CLUBS CUMULATIVE



GOALS AND ACTUAL MEMBERS CUMULATIVE



| | | | |
|------------------------|--------------------------------------------|-------------------------------------------------------|----------------|
| DROPPED CLUBS: 1 | 45 CLUBS OF 82 ADDED 1 OR MORE NEW MEMBERS | <u>GENDER DISTRIBUTION</u> | |
| <u>DROPPED MEMBERS</u> | | MALE | 1,123 (70.14%) |
| DECEASED | 22 | FEMALE | 478 (29.86%) |
| CLUB CANCELLED | 0 | CLICK HERE FOR HEALTH ASSESSMENT DATA | |
| OTHER | 196 | FAMILY UNIT MEMBERS | 203 |
| TOTAL | 218 | HEAD OF HOUSEHOLD | 98 |
| | | NON-HEAD OF HOUSEHOLD | 105 |